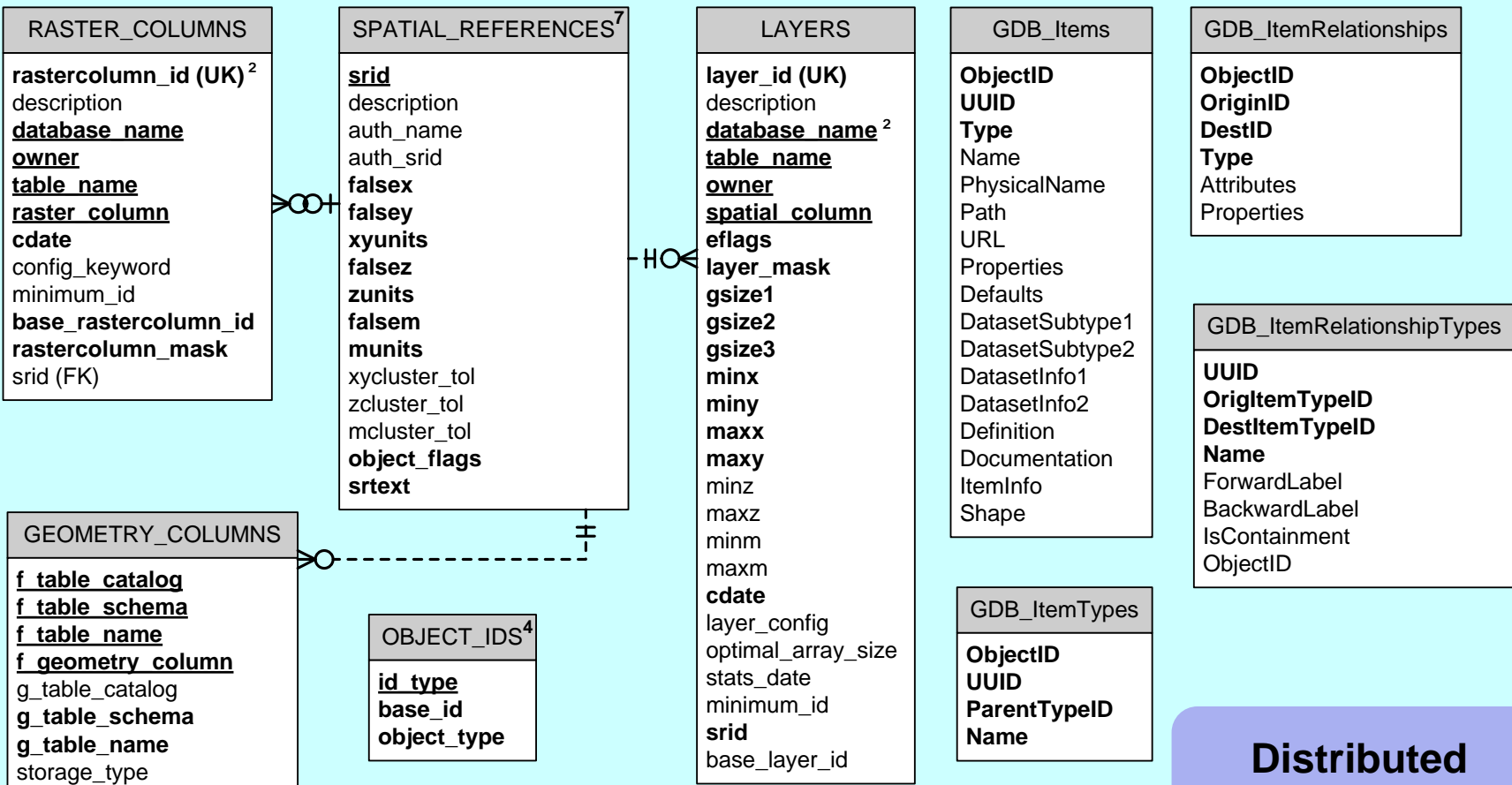
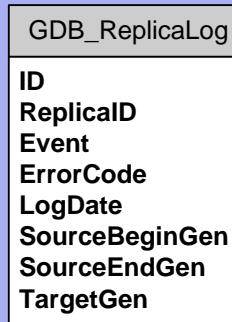


# ArcSDE Geodatabase System Tables<sup>8</sup>

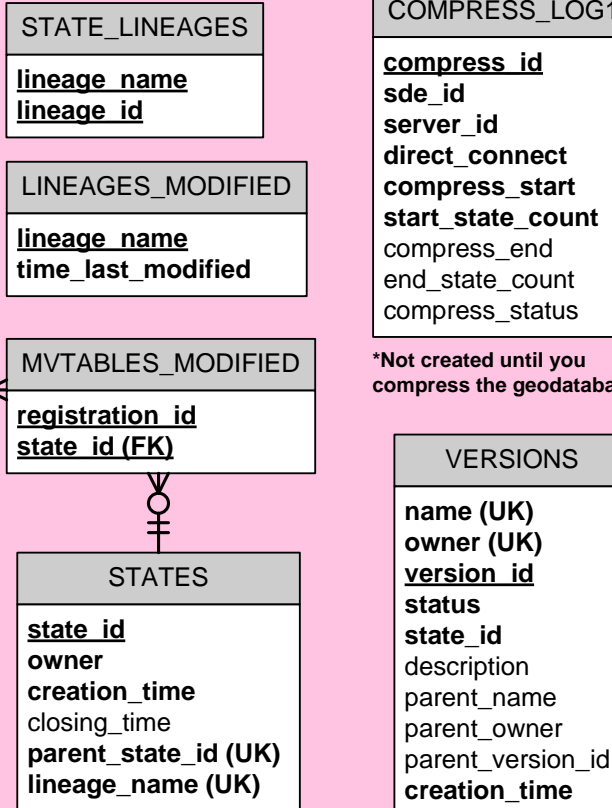
## Datasets



## Distributed Geodatabases



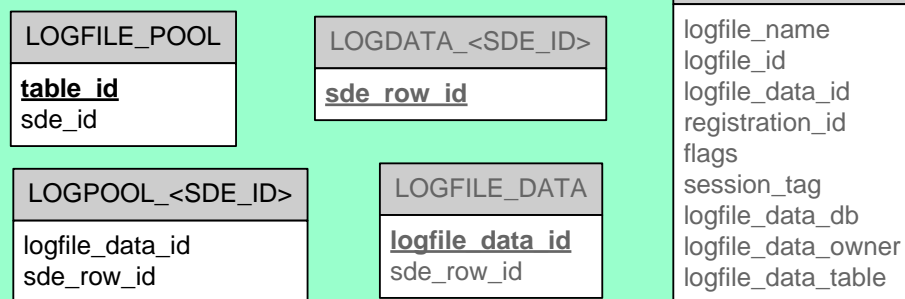
## Versioning



## Geodatabase Archives

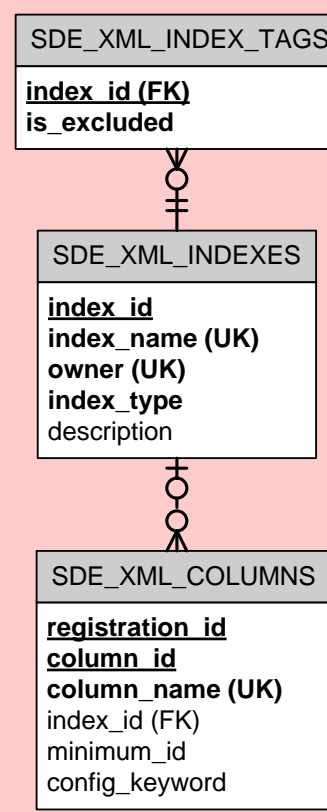


## Log Files\*

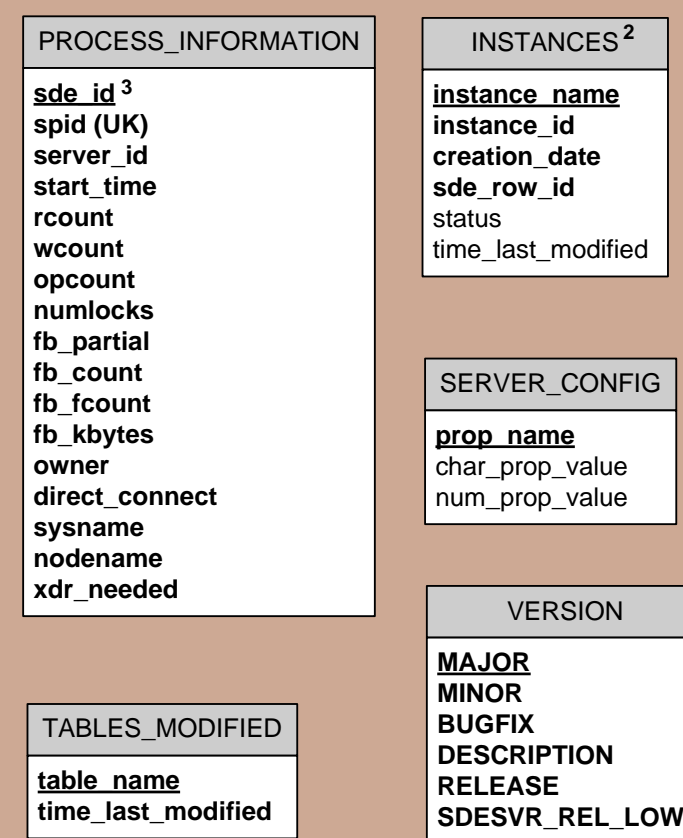


\*The LOGFILE\_POOL and LOGPOOL\_<SDE\_ID> tables are the only log file tables stored in the ArcSDE Administrator user's schema. The LOGDATA\_<SDE\_ID> table (or tables) are not created unless you set a size other than 0 for the LOGFILEPOOLSIZES in the SERVER\_CONFIG table.

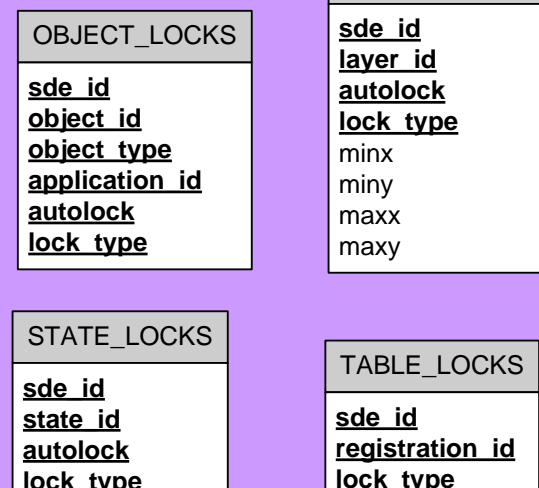
## ArcSDE XML



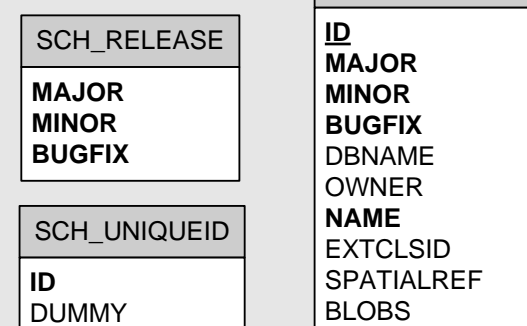
## System administration



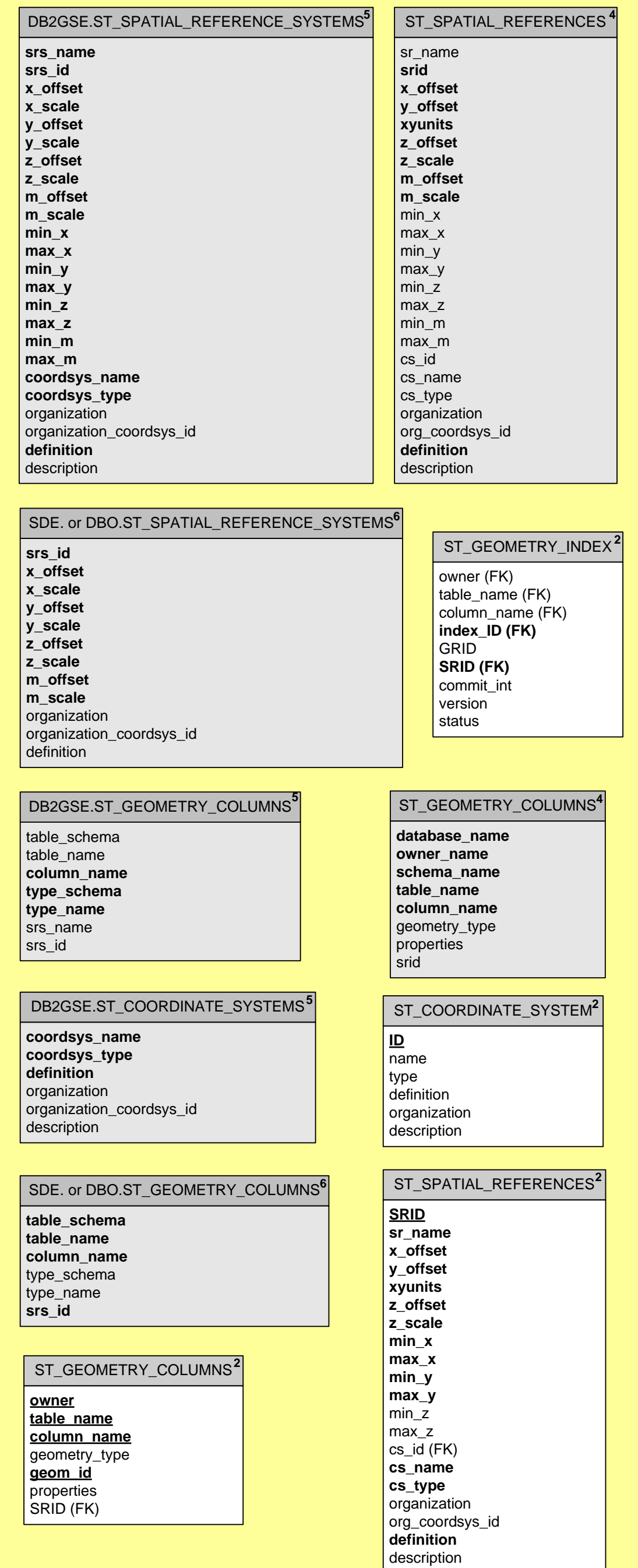
## Locking



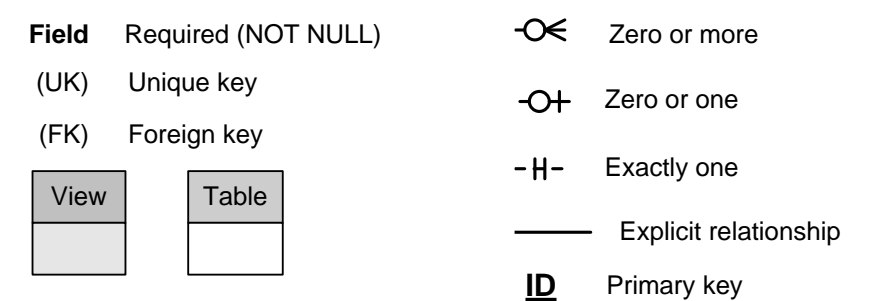
## Schematics



## Spatial type tables and views



## LEGEND



## NOTES

- Not present in Oracle
- Only present in Oracle
- Not present in DB2 or Oracle
- Only present in PostgreSQL
- Only present in DB2
- Only present in SQL Server 2008
- Stored in the Public schema in PostgreSQL
- In SQL Server and PostgreSQL, tables not prefaced with GDB\_ or SCH\_ are prefaced with SDE\_.