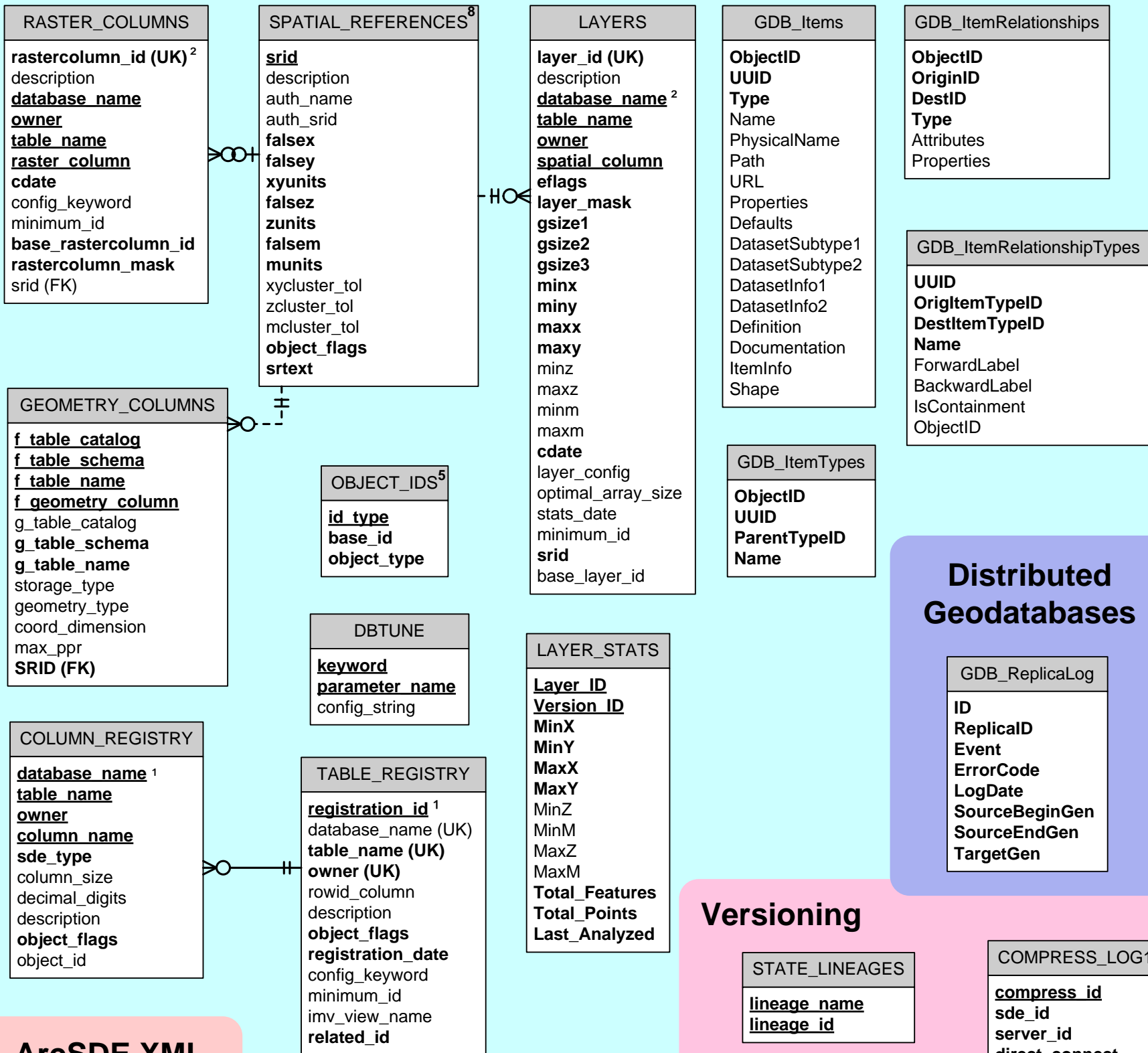
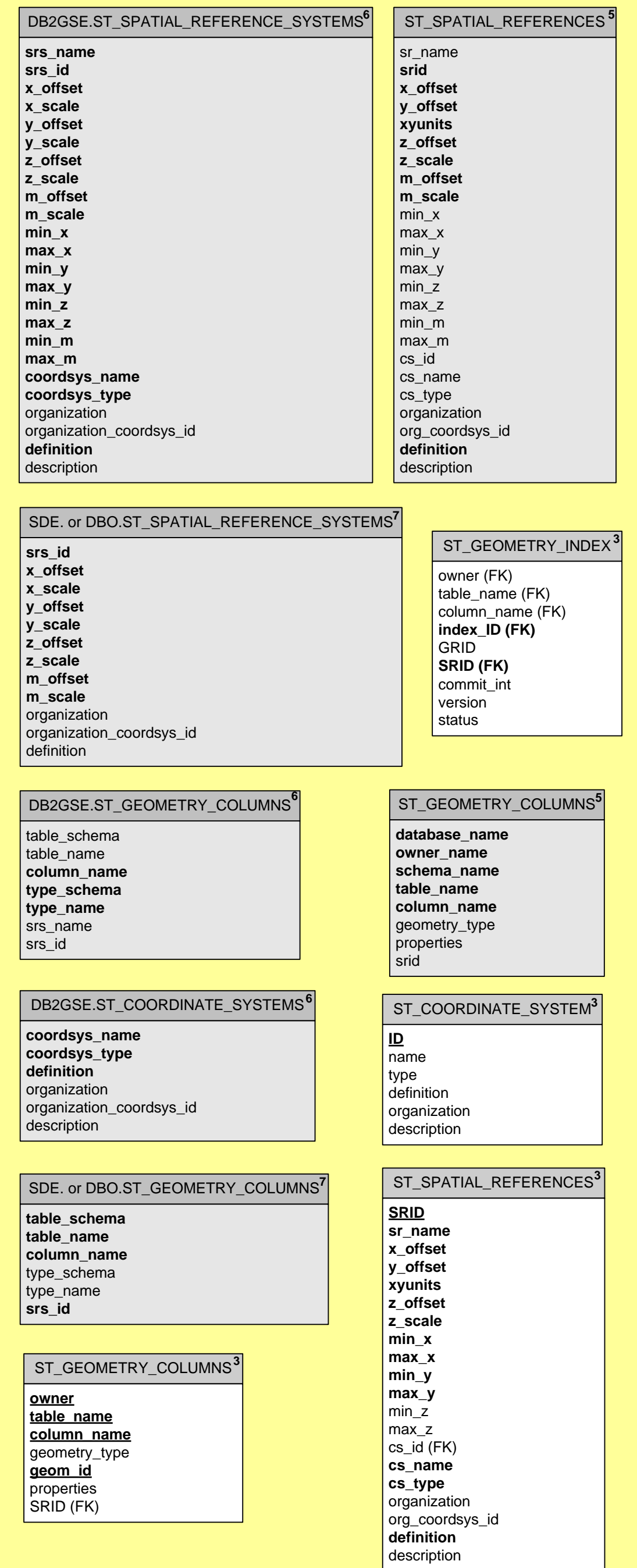


ArcSDE Geodatabase System Tables ⁹

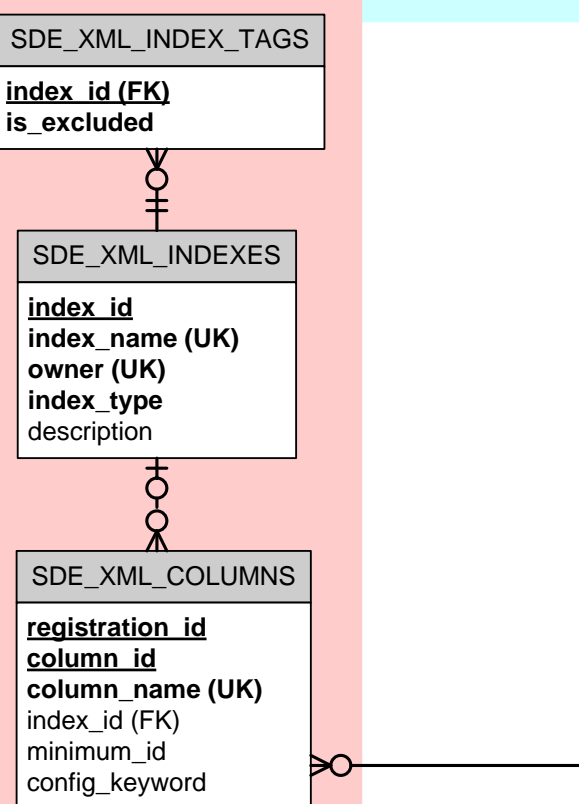
Datasets



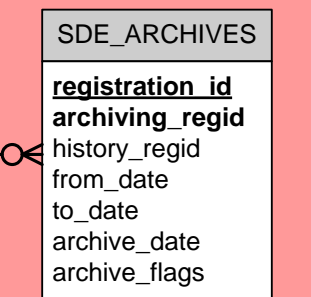
Spatial type tables and views



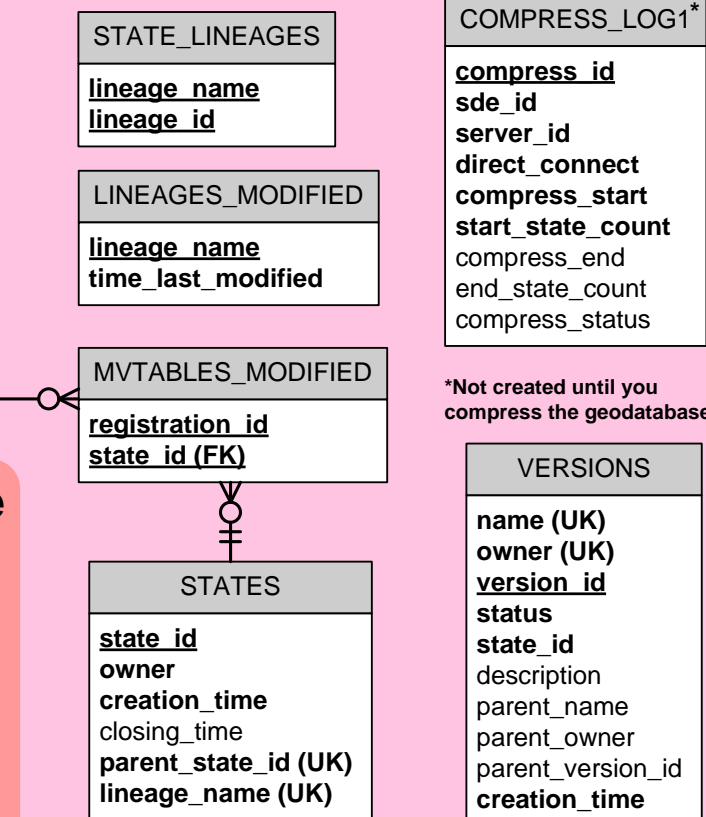
ArcSDE XML



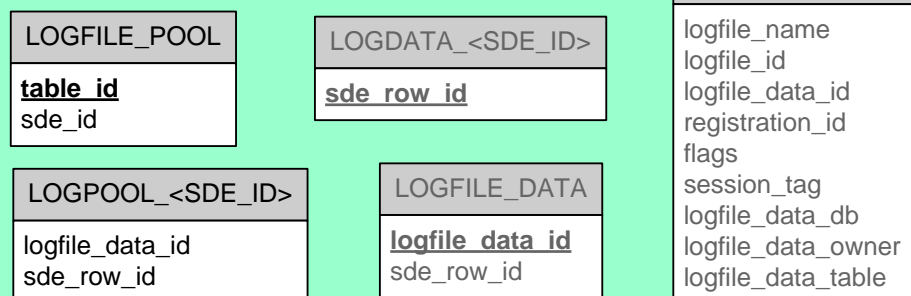
Geodatabase Archives



Versioning

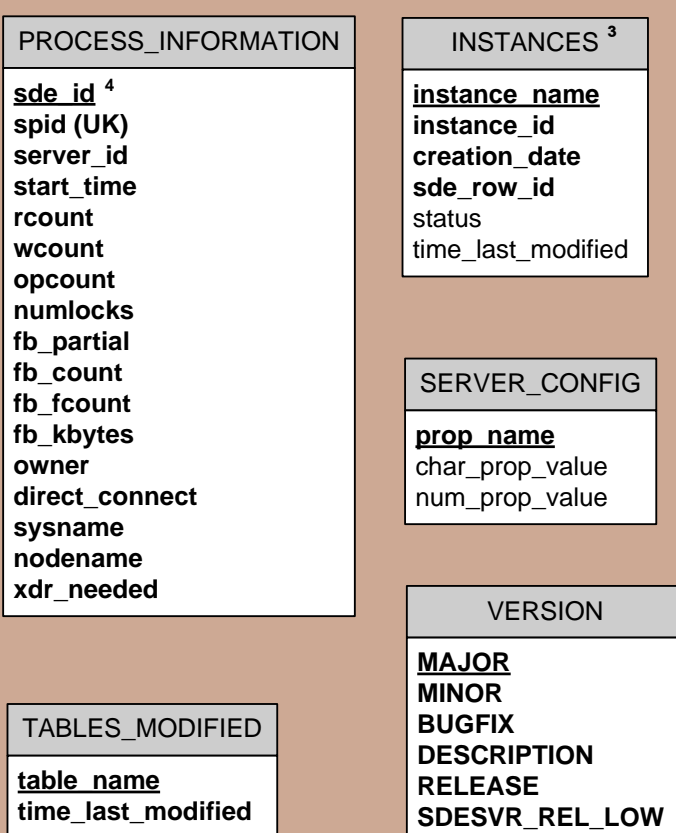


Log Files*

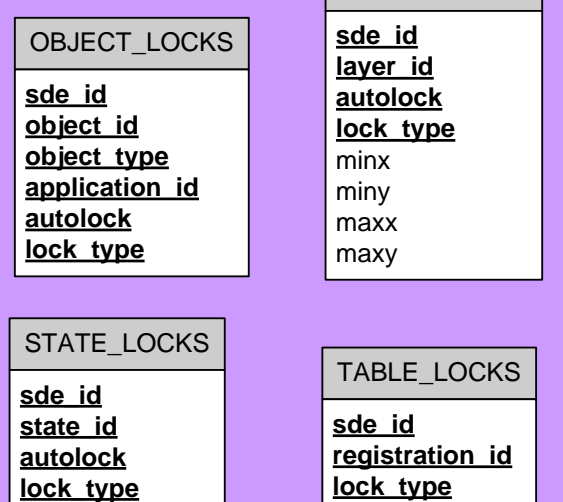


*The LOGFILE_POOL and LOGPOOL_<SDE_ID> tables are the only log file tables stored in the ArcSDE Administrator user's schema. The LOGPOOL_<SDE_ID> table (or tables) are not created unless you set a size other than 0 for the LOGFILEPOOLSIZES in the SERVER_CONFIG table.

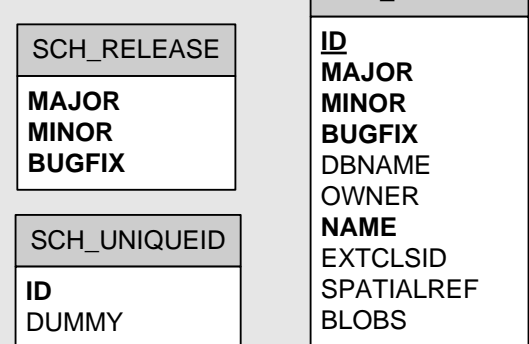
System administration



Locking



Schematics



LEGEND

- Field Required (NOT NULL)
- (UK) Unique key
- (FK) Foreign key
- View
- Table
- Zero or more
- Zero or one
- Exactly one
- Explicit relationship
- Primary key

NOTES

- Not present in Oracle
- Null in Oracle
- Only present in Oracle
- Not present in DB2 or Oracle
- Only present in PostgreSQL
- Only present in DB2
- Only present in SQL Server 2008
- Stored in the Public schema in PostgreSQL
- In SQL Server and PostgreSQL, tables not prefaced with GDB_ or SCH_ are prefaced with SDE_.