



Tracking Analyst Tutorial



Table of Contents

ArcGIS Tracking Analyst Tutorial

Tracking Analyst tutorial exercises	3
Analyzing hurricanes using Tracking Analyst	4

Tracking Analyst tutorial exercises

Tracking Analyst provides tutorial exercises in the form of guidebooks. Each guidebook provides data, steps, and conceptual information for executing a specific task. Reading a guidebook and completing the steps is the best way for beginners to learn Tracking Analyst.

[Guidebook for analyzing hurricanes using Tracking Analyst](#)

Analyzing hurricanes using Tracking Analyst

Hurricanes from the Atlantic Ocean pose an enormous threat to populations in the southeastern United States. Scientists continue to study hurricane patterns in an attempt to learn more about the environmental factors that influence their paths. This guidebook will show you how ArcGIS Tracking Analyst can be used to analyze the movement of hurricanes in the Atlantic Ocean. The data used in this guidebook was collected for hurricane positions in the Atlantic Ocean in 2000.

Complexité :
Débutant

Exigences relatives aux données :
Installé avec logiciel

Chemin des données :
C:\arcgis\ArcTutor\Tracking_Analyst

Objectif :
To learn some basic Tracking Analyst functionality by analyzing hurricane patterns in the Atlantic Ocean

Adding hurricane data to a map



To get started in this guidebook, a map document has already been created for you. Follow the steps below to open the map document and load hurricane data into Tracking Analyst.

Prérequis :

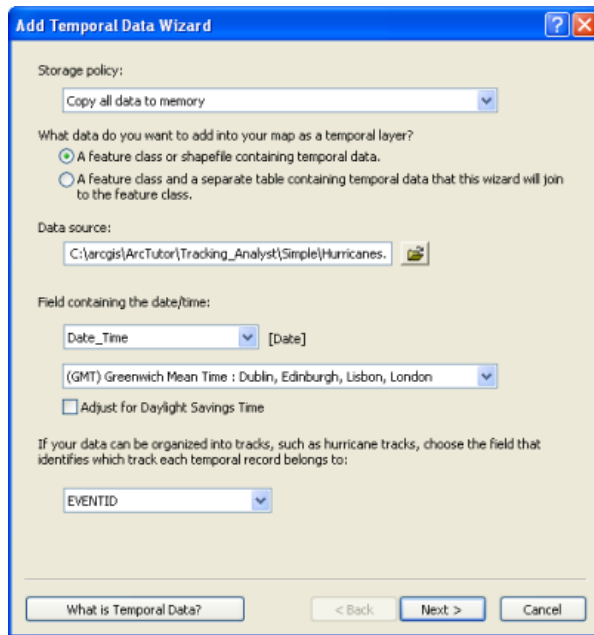
Before you begin this guidebook, make sure that the Tracking Analyst extension has been turned on and the Tracking Analyst toolbar has been added in ArcMap.

[Learn how to configure the Tracking Analyst environment.](#)

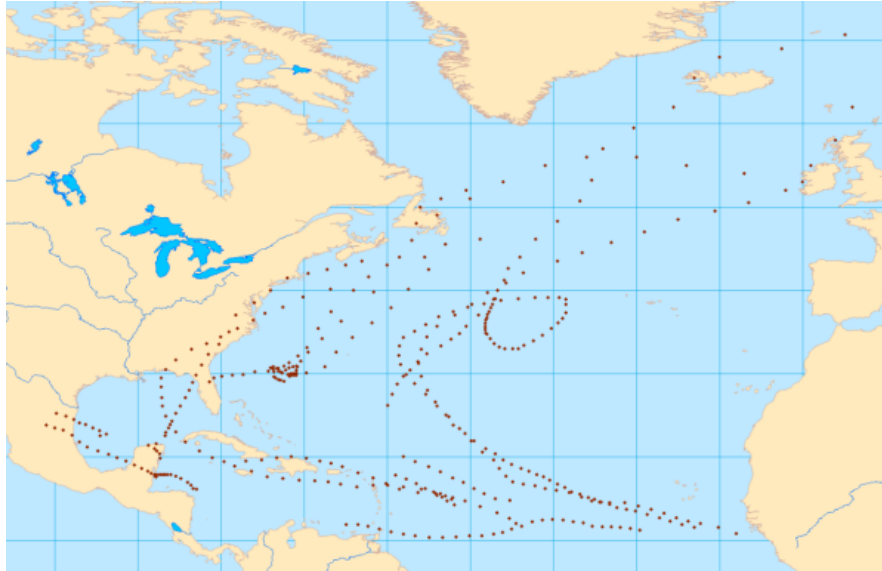
Étapes :

1. Start ArcMap and open the hurricanes2000.mxd file from the C:\arcgis\ArcTutor\Tracking_Analyst folder.
2. Click the Add Temporal Data button  on the **Tracking Analyst** toolbar to open the **Add Temporal Data Wizard** dialog box.
3. Leave the **Storage policy** drop-down set to the default value. Also, leave the next button set to the default option of **A feature class or shapefile containing temporal data**. This indicates that the data you want to load is simple tracking data and is contained in a single feature class or shapefile. Selecting the second button would indicate that you want to load complex tracking data contained in two separate tables.
4. Click the Open button  and browse to the feature class called atlantic_hurricanes_2000 in a geodatabase called Hurricanes in C:\arcgis\ArcTutor\Tracking_Analyst\Simple.
5. Click the **Choose the field containing the date/time** drop-down arrow and click the field called **Date_Time** to select it. This tells Tracking Analyst to look in this field to find information about when each event happened. A label of **[Date]** appears next to the drop-down menu, indicating that the field has a data type of Date. Tracking Analyst automatically knows how to extract the date and time information from fields of this type.
It is also possible to select a text or numeric field containing the date and time information. In those cases, some additional steps would need to be followed to tell Tracking Analyst how to parse the date and time from the values contained in the text field.
6. Leave the time zone set to the default of **Greenwich Mean Time** in the drop-down menu containing time zones. Uncheck the **Values are adjusted for daylight savings** check box. These settings indicate to Tracking Analyst that this data was collected in Greenwich Mean Time without any daylight savings adjustment.

7. Click the arrow on the next drop-down menu and click the field called **EVENTID** to select it. This tells Tracking Analyst how to organize the data into tracks. In this case, the **EVENTID** field contains the hurricane name for each event. Each individual hurricane's path will become a track in Tracking Analyst.
If you have tracking data that cannot be organized into tracks, **<None>** can be selected to indicate that the data contains no tracks. This will make some options designed to symbolize tracks less meaningful. Essentially, Tracking Analyst will handle each individual event as a separate track.
8. Leave the rest of the **Add Temporal Data Wizard** dialog box set to the default settings. Confirm that your dialog box looks like the one below and click **Next** to proceed.



9. The next step in the **Add Temporal Data Wizard** dialog box gives you the ability to import only a subset of the data contained in a feature class by clicking the **Query Builder** button. In this case, you want to import the entire feature class, so click **Finish** to complete the wizard and add the data to your map.
10. A new tracking layer called **atlantic_hurricanes_2000** now appears in the table of contents with a default symbol. Right-click the layer and click **Zoom to Layer** to make your map zoom to the extent of the new tracking layer. Your map should now look like the image below.

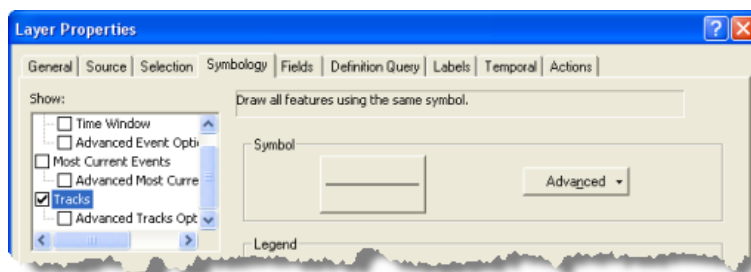


Inspecting hurricane data using the Step tool

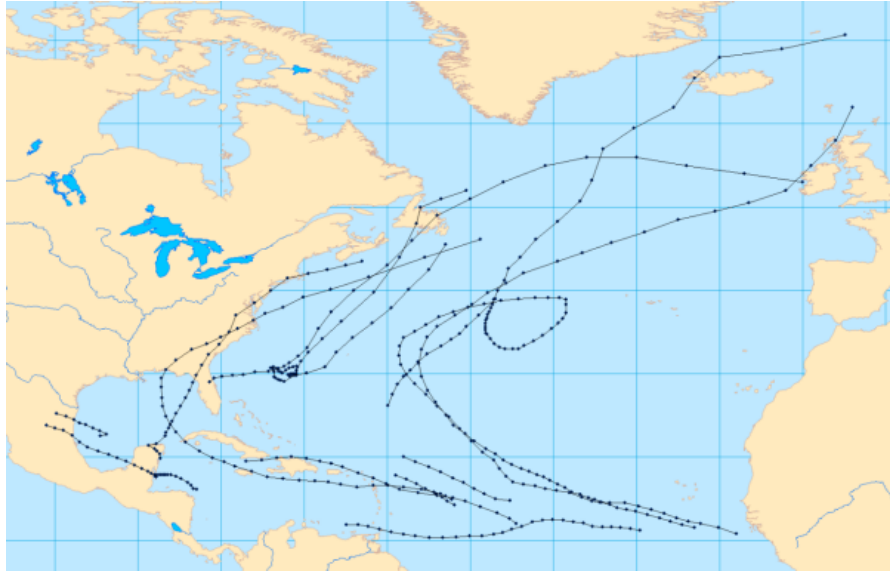
Now that you have loaded the hurricane data into your map as a tracking layer, it is time to become more familiar with the data. The following steps will show you how to inspect data using the Tracking Analyst Step tool.


Étapes :

1. Right-click the **atlantic_hurricanes_2000** layer in the table of contents and click **Properties** to bring up the **Layer Properties** dialog box. Click the **Symbology** tab.
2. On the **Show** panel, scroll down and check the check box next to **Tracks**.



3. Leave all other settings on the dialog box set to their default values and click **OK**.
Track lines are connecting the dots between events on your map. This is your first look at the paths taken by these hurricanes in 2000. Symbolizing these track lines is not required to complete the next steps of this guidebook, but it will make it easier to understand what is happening.



4. Click the **atlantic_hurricanes_2000** layer in the table of contents to make sure it is selected and click the Step tool button  to activate the Step tool. This tool is designed to work with the selected tracking layer.
5. If you pause the pointer on the map, an icon is shown next to the pointer, indicating that the Step tool is the active map tool. Click on an event on the map, or click and drag a box around an event on the map, to select it.
The selected event becomes highlighted on the map, and the **Event Attributes** dialog box appears. The selected event on the map also appears selected on the **Event Attributes** dialog box.

Arrow buttons are used to step through the events contained in a track

Each track can be expanded to list the individual events contained in the track

The selected event changes as you step through the track

Attributes for the selected event are listed in the details window

Field	Value
OBJECTID	274
Shape	Point
DAY	10/1/2000
TIME	12:00:00
LAT	42.1
LONG	-43.6
PRESSURE	990
WINDSPEED	55
STAGE	tropical storm
EVENTID	Isaac
TA_DATE	10/1/2000 12:00:00
Date_Time	10/1/2000 12:00:00 PM

6. Click the arrow buttons near the top of the **Event Attributes** dialog box to step through the events in the selected hurricane track. You can also use the UP and DOWN ARROW keys on the keyboard to step through the tracks.

As you are stepping through the events in a track, notice that the attributes on the right side of the **Event Attributes** dialog box change as the selected event changes. However, notice that the **EVENTID** attribute is the same for all events. This is because it was used to define the tracks. Notice that the value of the **EVENTID** (**Isaac** in the image above) also appears in the tree view on the left side of the **Event Attributes** dialog box. This tree view shows individual tracks by their track ID. If a track is expanded, every event in the track is listed by its time. If you look closely at the times listed, you will notice that all the events are exactly six hours apart. This is because the data you are viewing was created from measurements of hurricane positions that were made every six hours.

7. When you are done inspecting the data, close the **Event Attributes** dialog box.

Inspecting hurricane data using a data clock

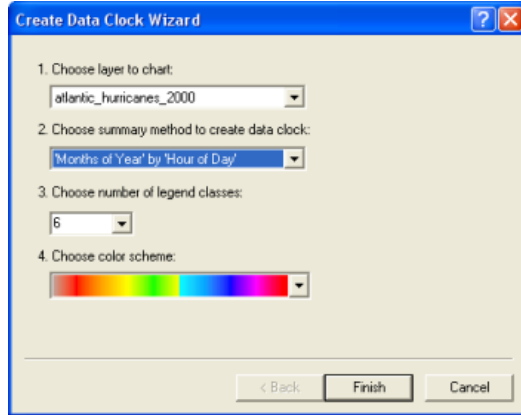
In the previous section, you learned that the hurricane data was created from measurements of hurricane positions every six hours. Now you will use a charting tool called a data clock to see this pattern in the data. The data clock is a tool that is used to visualize the temporal frequency of your data for various time periods. In other words, it allows you to see how much data exists at different times.

Étapes :

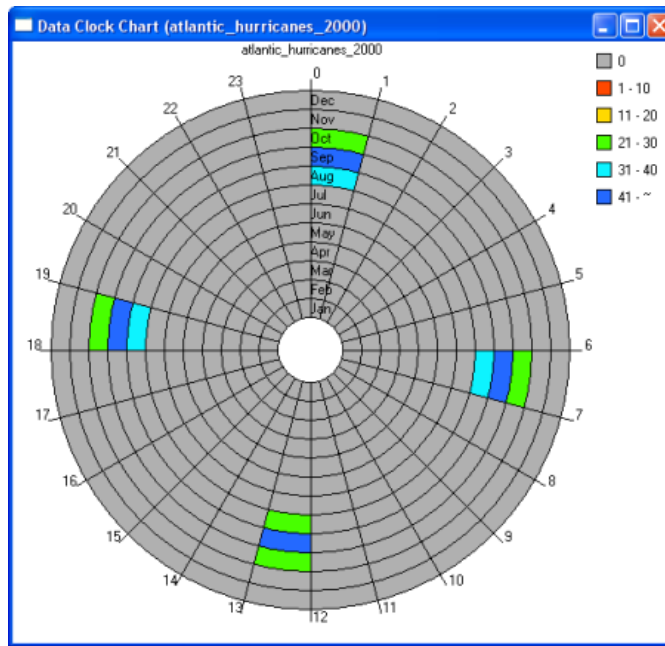
1. Click **Tracking Analyst** on the **Tracking Analyst** toolbar to expand it. Point to **Data Clock** on the drop-down menu to expand the pull-right menu. Click **Create Data Clock** to bring up the **Create Data Clock Wizard** dialog box.



2. The **atlantic_hurricanes_2000** layer is automatically selected in the **Choose layer to chart** drop-down list in step one of the wizard. This is because it is the only tracking layer available in the map document. In step two of the wizard, click the **Choose summary method to create data clock** drop-down arrow and click **'Months of Year' by 'Hour of Day'**.
3. Leave the rest of the wizard set to the default values. Six legend classes will be used, and a default color ramp will be used to select colors for the legend. Click the **Finish** button to complete the wizard and create the data clock.



- A data clock is created in a new dialog box titled **Data Clock Chart (atlantic_hurricanes_2000)**. You can click and drag the corners of the dialog box to resize it. In this case, you probably want to enlarge the data clock to be able to see all the detail.



- The colored cells in the data clock indicate periods of time when hurricane events exist in the data. There are two significant observations that can be made about the hurricane data by looking at the data clock. First, notice that there are 24 wedges going around the data clock. Each wedge represents one of the 24 hours in a day. You can quickly see that all the data resides in only four of these wedges. These four wedges correspond to 12:00 AM, 6:00 AM, 12:00 PM, and 6:00 PM. As you observed earlier using the step tool, each hurricane event was observed at one of these times of day. Now focus your attention on the circular rings in the data clock. Each ring represents a month of the year. The innermost ring represents January, and the outermost ring represents December. You can see that all the data resides in just three of these rings: August, September, and October. This seems reasonable, because hurricane season is often regarded as spanning these three months in late summer and early autumn. If you look at

the colors in the legend, you can see that the most hurricane observations in the data occur in the month of September, which is considered to be the pinnacle of hurricane season.

6. When you are done looking at the data clock, close the **Data Clock Chart (atlantic_hurricanes_2000)** dialog box.

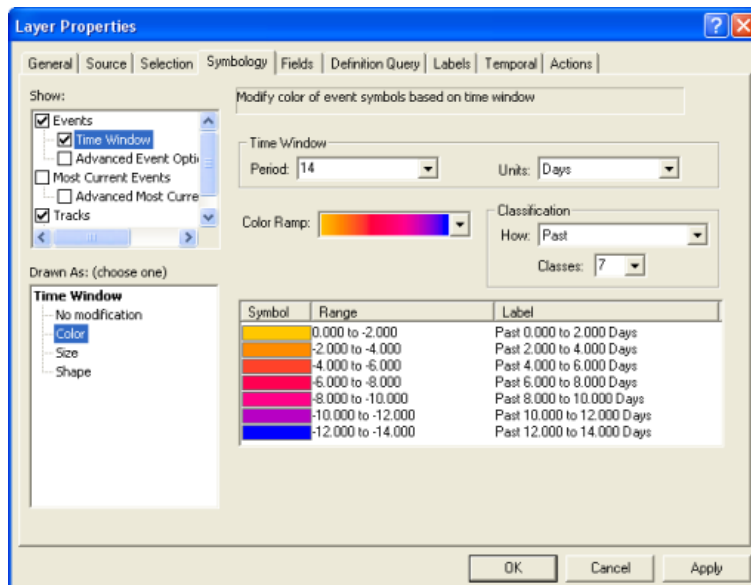
If you want to retrieve a data clock after closing it, click **Tracking Analyst** on the **Tracking Analyst** toolbar. Point to **Data Clock** on the drop-down menu to expand the pull-right menu, and click **Manage** to open the **Data Clock Manager** dialog box. From this dialog box, data clocks can be opened, removed, and placed onto the layout view.

Symbolizing hurricane data

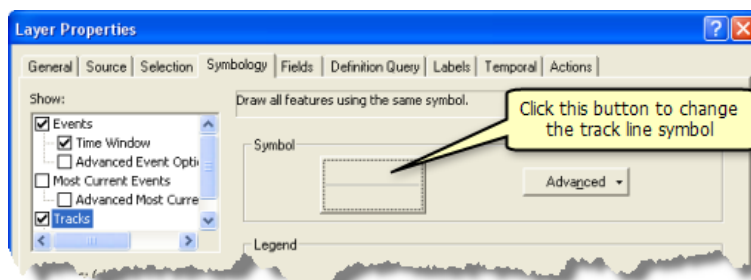
Now that you are familiar with the tracking data you are working with, you can move on to some more advanced tracking symbology options. The following steps will show you how to set up a time window for viewing the hurricane data.

Étapes :

1. Right-click the **atlantic_hurricanes_2000** layer in the table of contents and click **Properties** to bring up the **Layer Properties** dialog box. Click the **Symbology** tab.
2. On the **Show** panel, check the check box next to **Time Window**.
3. On the **Drawn As** panel, click **Color**. This means that the symbology of the hurricane data will change colors within the time window.
4. Click in the **Period** text box and enter 14.
5. Click the **Units** drop-down arrow and click **Days**. This means that your time window will only display hurricane positions within a 14-day period.
6. Click the **Color Ramp** drop-down arrow and choose a color ramp that will show contrast when replaying the data.
7. Click the **Classes** drop-down arrow and click **7**. This means that the 14-day time window will be split into seven different classes, each with its own color from the selected color ramp. Events that happened within the past two days will be assigned one color, events happening between two and four days ago will be assigned a different color, and so on.
8. Check to make sure that your dialog box looks like the one below and click **Apply** to save the changes.

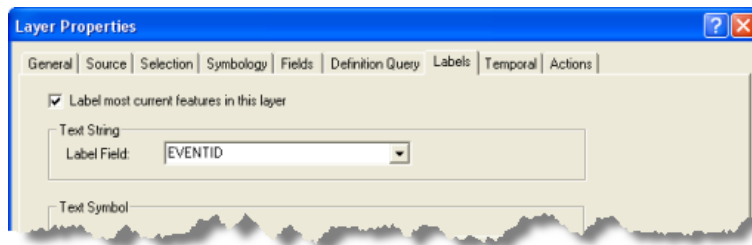


- If you followed the steps in the previous section of this guidebook, the check box next to **Tracks** on the **Show** panel should be checked. This indicates that track lines will be symbolized in addition to the time window you set up. Leave the check box checked, but click the **Tracks** text next to the check box to access the properties for the track lines.



- Click the large button containing a line symbol to bring up the **Symbol Selector** dialog box. This dialog box allows you to change the symbology of your track lines.
- Click the **Color** button and click a light gray color to select it. In this case, a light gray color is better than the default black color because it will allow you to see the track lines without taking too much attention away from the event symbols on the map.
- Click **OK** on the **Symbol Selector** dialog box and click **Apply** on the **Layer Properties** dialog box to apply the changes.
- Click the **Labels** tab of the **Layer Properties** dialog box.
- Check the **Label most current features in this layer** check box to turn on labeling. This type of labeling will label the most current event in each hurricane track with an attribute of your choice.
- Click the **Label Field** drop-down arrow and click **EVENTID**. As you saw earlier, the **EVENTID** field contains the hurricane names. Labeling each hurricane on the map with its name will make it easy for you to quickly identify each hurricane when you are visualizing the data in the next section of this guidebook.

16. Leave the rest of the label properties set to the default values and click **OK** on the **Layer Properties** dialog box to close it and apply the changes.




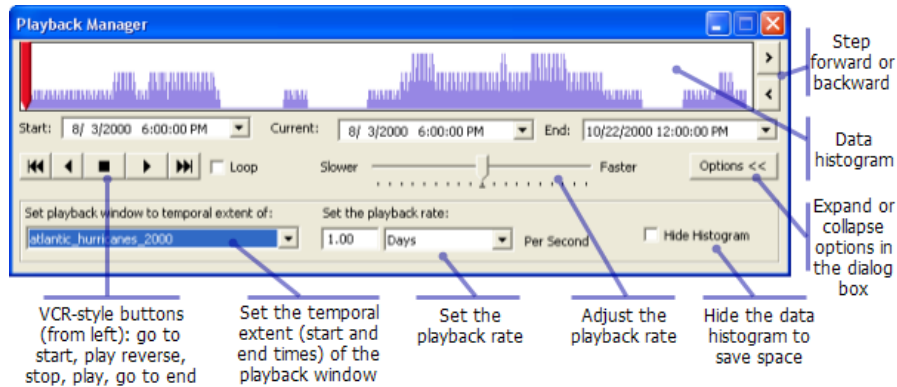
The first thing you will probably notice when you close the **Layer Properties** dialog box is that the **atlantic_hurricanes_2000** layer can no longer be seen on your map. The layer is still there, and it can be seen in the table of contents along with legend information about the time window you just configured. The reason the layer is not being displayed is because none of the events fall within the 14-day time window. By default, Tracking Analyst displays the current date and time on the map. If you are reading this guidebook right now, these hurricanes in 2000 happened much more than 14 days ago! All the events in the layer appeared earlier because Tracking Analyst displays all events in the past if there is no time window defined. To have Tracking Analyst display the hurricane data in the time window, you will use Playback Manager in the next section to change the time being displayed on the map.

Playing back hurricane data

Now that you have defined the symbology for your tracking layer, it is time to play back the data using Playback Manager. Playback Manager is similar to a DVD player. It allows you to set the start and end times for playing back events and change the speed of playback. It also allows you to pause the playback, continuously loop the playback, and even play back events in reverse.

Étapes :

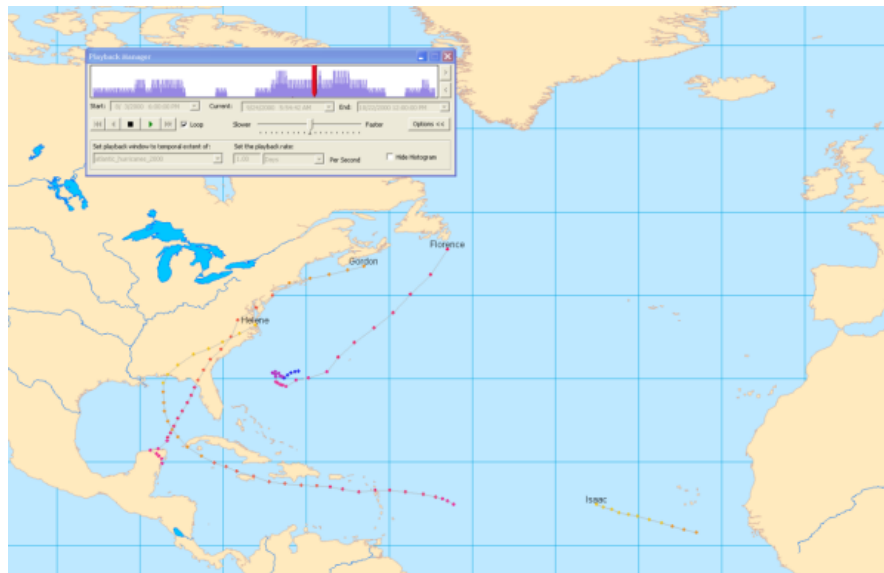
1. Click the Playback Manager button  on the **Tracking Analyst** toolbar to open the **Playback Manager** dialog box.
2. Click the **Options** button on the Playback Manager dialog box to see a full view of it. Click the title bar of the dialog box to drag it into a convenient location on your screen.
3. Click the **Set playback window to temporal extent of** drop-down arrow and click **atlantic_hurricanes_2000**, which is the tracking layer you just added. This setting adjusts the start and end times of the playback window to include events for all data in the selected layer or layers. If you add more than one tracking layer to your map, you can set the temporal extent, the start and end times, in a few different ways. You can set it to all tracking layers, only layers that are visible, or just a single layer.
4. Click the **Set the playback rate** drop-down arrow and click **Days**. This sets the playback rate to one day per second. The **Playback Manager** dialog box should now look like the image below.



Earlier, you inspected the hurricane data and learned that each hurricane track contains four events, or measurements, per day. A playback rate of one day per second seems reasonable for this frequency of data, because it will cause a maximum of four data points to appear on the map per second during the lifetime of each hurricane track.

5. You are now ready to play back the hurricane data. Before clicking the Play button, make sure that the red time indicator is located at the left edge of the playback window, as shown above. By default, Playback Manager initially sets the time to the beginning of the playback window. In this case, the beginning time is initially set to 6:00 PM on 8/3/2000. As soon as you click Play, the time will advance one day per second.

Playback Manager remains open, indicating the progress of the playback. As the data begins to replay on the map, your map should look similar to the image below.



6. Check the **Loop** check box to play back the data continuously. When the time reaches the end of the playback window, it will automatically be reset back to the beginning of the playback window and playback will continue.
7. As the data is playing back, adjust the speed of playback by clicking and dragging the speed indicator in the center of Playback Manager toward the **Slower** or **Faster** labels.

8. Notice that the histogram in Playback Manager shows you how much data exists at different times in the playback window. Click the Stop button to stop the playback at a place on the timeline where the histogram shows there is a lot of data.
9. Click the Next and Previous buttons on the right side of Playback Manager to manually step forward and backward through the data. These buttons adjust the current time being displayed by a set increment, determined by the playback rate and any adjustments made to the speed using the indicator bar.
10. You can also change the time being displayed by clicking and dragging the red time indicator or by clicking anywhere on the histogram, which will set that point to the current time.
Now that you are familiar with several ways to play back the data and set the time being displayed, you can use these techniques to analyze patterns in the hurricane data. Using whichever method of playback you are most comfortable with, observe the overall pattern of hurricane motion in the Atlantic Ocean. Notice how there seem to be two distinctive paths that the hurricanes take. Hurricanes located far enough south seem to move predominantly to the west. Hurricanes that are further to the north also begin by moving west, but they are ultimately redirected to the northeast when they get near the continent of North America.

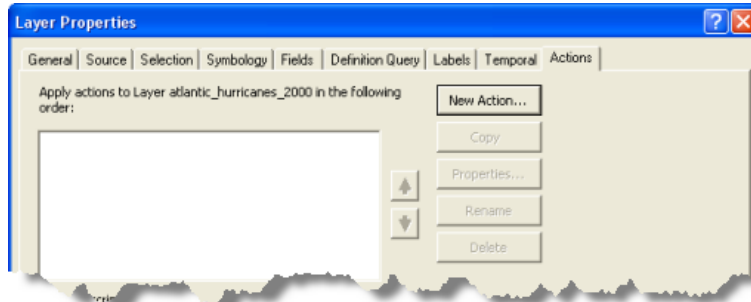
Another interesting pattern can be observed when looking at the labels of the hurricanes during playback. Hurricanes are named in alphabetical order each year. Notice as you play back the data that the first hurricane is named Alberto. As new hurricanes appear, notice how the names progress in alphabetical order until the final hurricane appears, which is named Nadine.

Creating a highlight action to show excessive wind speeds

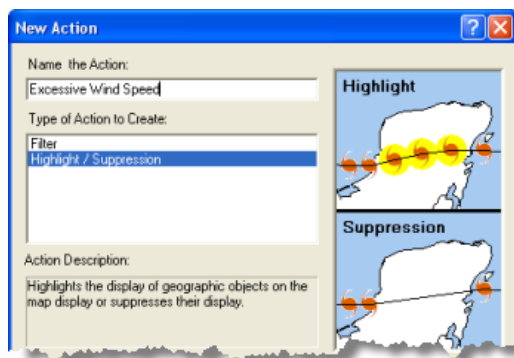
Now that you are familiar with how to symbolize and play back tracking data in Tracking Analyst, you can begin to do more advanced forms of analysis. The hurricane data you are working with contains wind speeds for every hurricane event. If you wanted to analyze patterns of high wind speed in the data, you could look in the attribute table or step through hurricane events using the Step tool to view event attributes. However, in some cases it can be more powerful to visualize patterns in the data. Layer actions are provided in Tracking Analyst to do additional data processing and symbolization on tracking layers. In the following section, you will set up a highlight action to be able to see when a hurricane's wind speed is at or above 75 miles per hour.

Étapes :

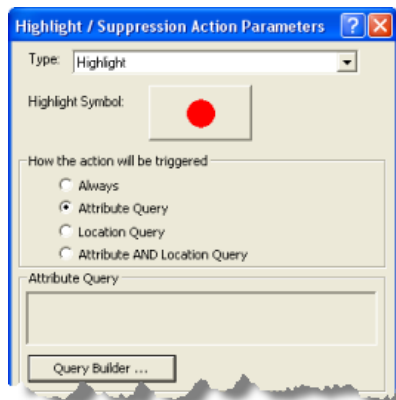
1. Right-click the atlantic_hurricanes_2000 tracking layer in the table of contents and click **Properties**.
2. Click the **Actions** tab on the **Layer Properties** dialog box.
3. Click the **New Action** button to open the **New Action** dialog box.



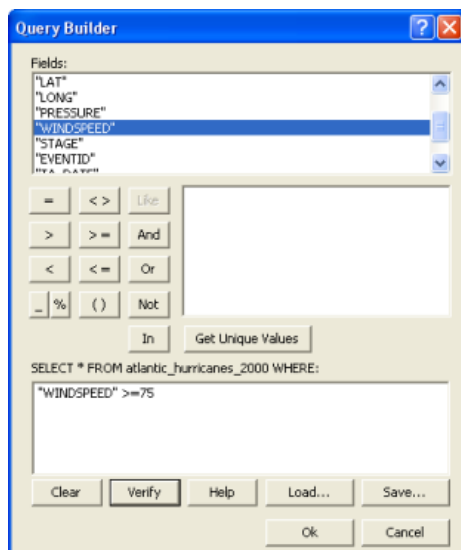
4. Type `Excessive Wind Speed` in the **Name the Action** text box and click **Highlight/Suppression** in the **Type of Action to Create** list box. It is useful to give your actions meaningful names so you can remember what they are doing.



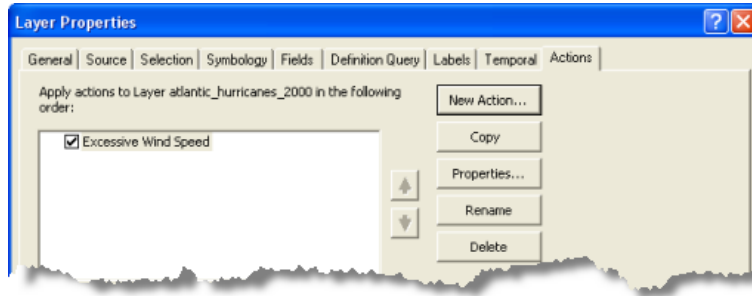
5. Click **OK** on the **New Action** dialog box to open the **Highlight/Suppression Action Parameters** dialog box.
6. Leave the **Type** drop-down list set to the default value of **Highlight**. You want to highlight hurricane events with excessive wind speeds on the map. The **Suppression** option has the opposite effect. It is used to hide, or suppress, events on the map rather than highlight them.
7. Click the **Highlight Symbol** button to change the symbol that will be used to highlight events. Click the **Color** button on the **Symbol Selector** dialog box and choose a bright color that will show up more prominently on the map than the default black highlight. Click inside the **Size** text box to place your cursor in it. Enter `18.0` for the symbol size. A larger symbol will show up more prominently on the map.
8. Under the **How the action will be triggered** label, click the **Attribute Query** button so you can trigger the action using an attribute query. The **Query Builder** button becomes enabled.




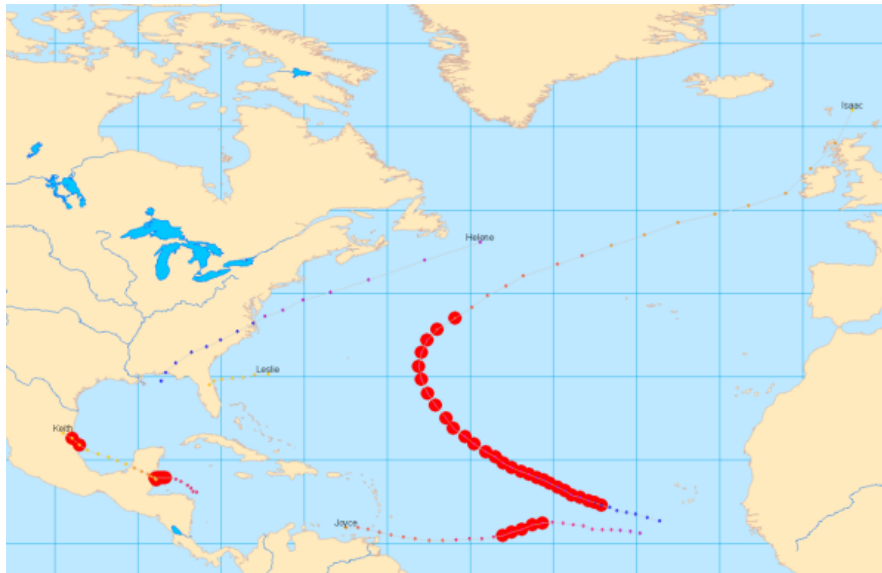
9. Click the **Query Builder** button to open the **Query Builder** dialog box.
10. Scroll down through the **Fields** list box and double-click **"WINDSPEED"**. This will add **"WINDSPEED"** to the query expression in the text box at the bottom of the dialog box.
11. Click the Greater Than Or Equal To (\geq) button to add the \geq operator to the query expression. Click in the query expression text box to place a cursor at the end of the query expression. Type 75 to complete the query expression.
12. Make sure that your dialog box looks like the example below and click the **Verify** button to confirm that the query expression you have created is valid. Click **OK** to close the **Query Builder** dialog box. Your query expression, **"WINDSPEED" \geq 75**, appears in the read-only Attribute Query text box in the middle of the **Highlight/Suppression Action Parameters** dialog box.



13. Click **OK** to close the **Highlight/Suppression Action Parameters** dialog box.
14. Notice that the new action you just created now appears in the list box on the **Actions** tab of the **Layer Properties** dialog box. By default, the check box next to the new action is checked. This means that the action is enabled. Unchecking the check box would disable the action. Leave the check box checked so that you can see the results of your new highlight action. Click **OK** to close the **Layer Properties** dialog box.



- Now click the Playback Manager button  to open Playback Manager. Play back the hurricane data using any of the methods you learned earlier in this guidebook. Some hurricane events are highlighted on the map. This indicates that the wind speed for these observations was equal to or greater than 75 miles per hour. If you want to verify this, you can use the Step tool while Playback Manager is still open to view the event attributes for the highlighted events.



Notice that excessive wind speeds occur most often for hurricanes out in the middle of the ocean. However, on some occasions, such excessive wind speeds can occur over land. These wind speeds could pose a huge risk to populations living in those areas. In the next section, you will configure this action further to detect hurricane events with excessive wind speeds over land.

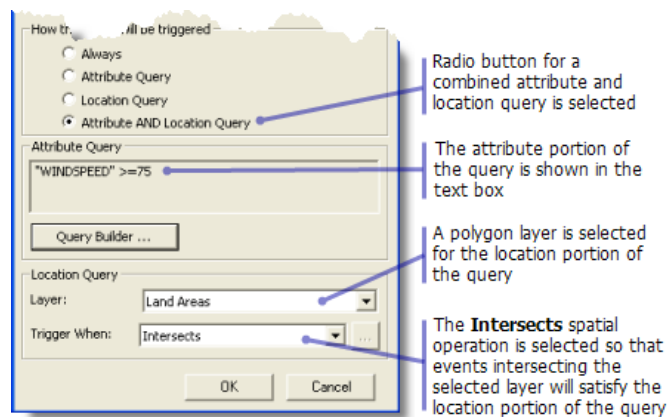
Creating a highlight action to show high wind speeds over land


In the previous section, you created a highlight action triggered by an attribute query to show excessive wind speeds. In the following section, you will add a location query to the trigger to show excessive wind speeds over land. Therefore, the final action will be triggered by a combination of an attribute query and a location query.

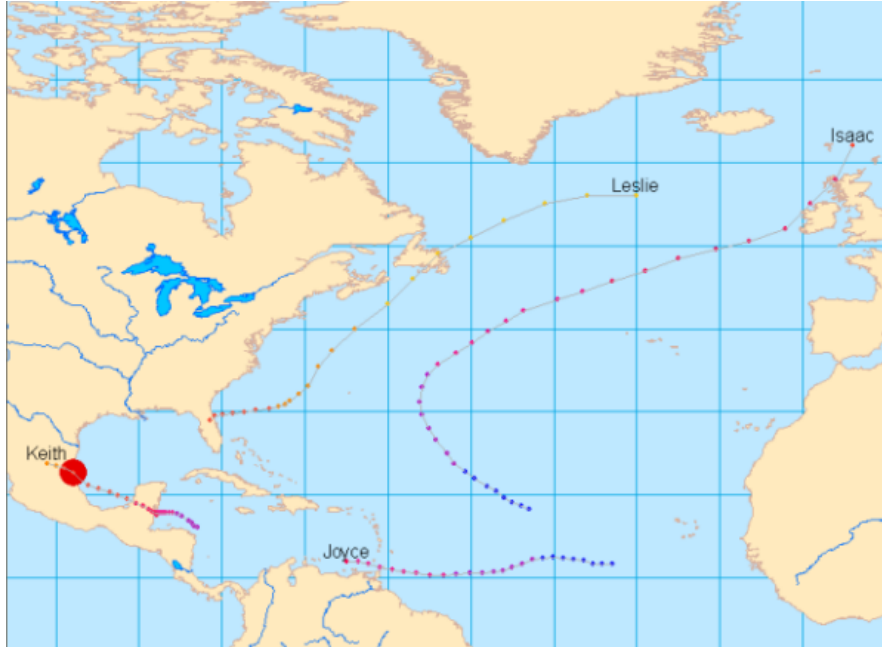
Étapes :

- Right-click the **atlantic_hurricanes_2000** tracking layer in the **Table of Contents** and click **Properties**.

2. Click the **Actions** tab on the **Layer Properties** dialog box.
3. Double-click the text for the existing action, called **Excessive Wind Speed**. This opens the **Highlight/Suppression Action Parameters** dialog box so that you can modify the properties of the existing action.
4. Under the **How the action will be triggered** label, click the **Attribute AND Location Query** button. Notice that your existing attribute query expression remains in the **Attribute Query** text box. The drop-down lists on the **Location Query** panel at the bottom of the dialog box are enabled so that you can add a location query to the trigger.
5. For this action, you'll want to show excessive wind speeds over land. Therefore, you are interested in hurricanes that intersect the **Land Areas** feature class. Click the **Layer** drop-down arrow and click **Land Areas** to select it.
6. Click the **Trigger When** drop-down arrow and click **Intersects** to select it. When your dialog box looks like the one below, click **OK** to apply the changes.



7. Click **OK** on the **Layer Properties** dialog box to close it.
8. Now click the Playback Manager button  to open Playback Manager. Play back the hurricane data using any of the methods you learned earlier in this guidebook. Only two events in your tracking layer satisfy the trigger criteria and are highlighted. One occurrence of excessive wind speeds over land belongs to Hurricane Keith in Mexico. This event is shown highlighted in the image below.



The other occurrence of excessive wind speeds over land belongs to Hurricane Michael over Newfoundland in Canada.

You should now be familiar with the basic capabilities of Tracking Analyst, but there is still a lot more for you to discover!

- [Learn more about temporal data](#)
- [Learn more about working with real-time data](#)
- [Learn more about symbolizing temporal data](#)
- [Learn more about the Playback Manager](#)
- [Learn more about data clocks](#)
- [Learn more about actions](#)
- [Learn more about the Animation Tool](#)
- [Learn more about tracking symbology options in ArcGlobe](#)
- [Learn more about the Step tool](#)